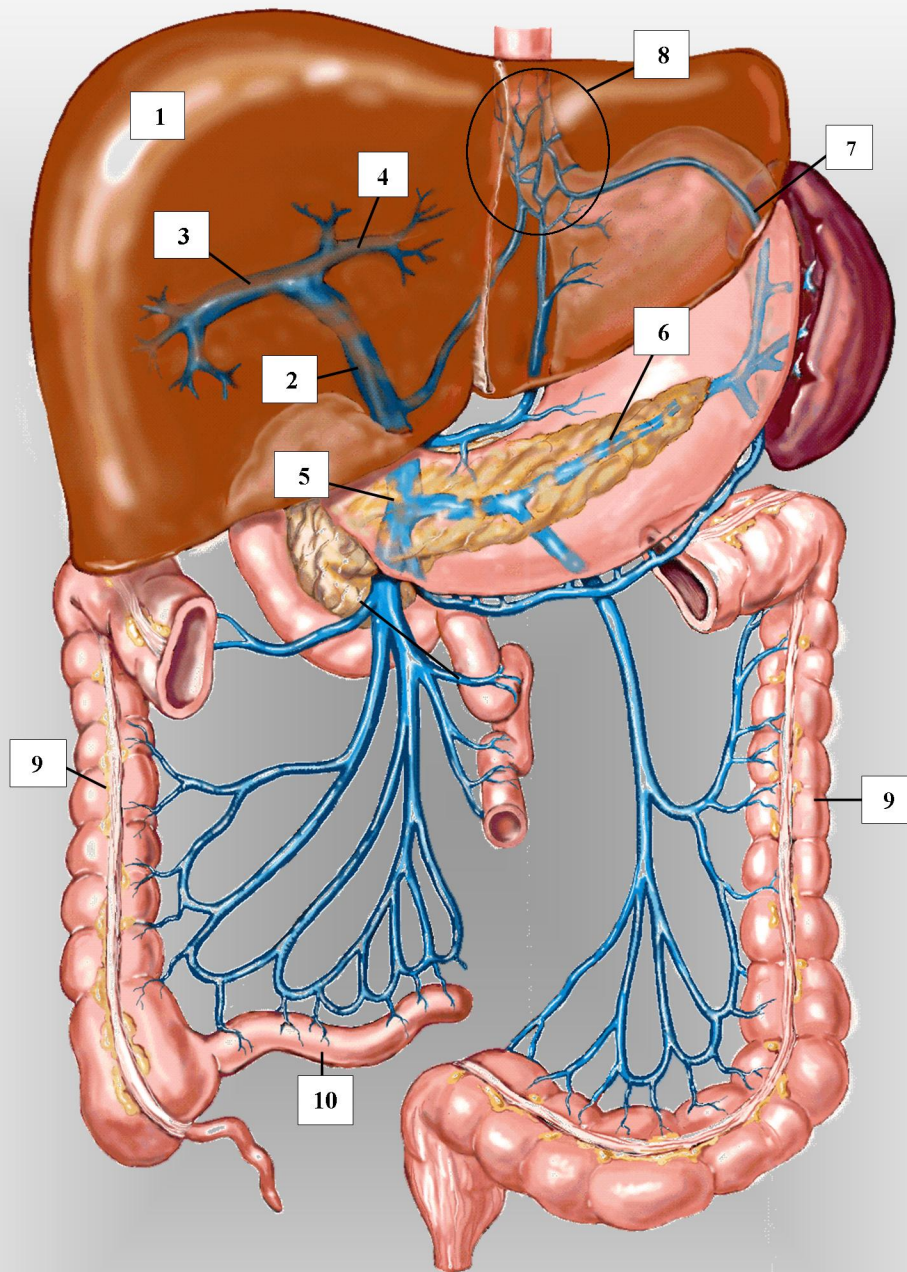


# THE PORTAL VENOUS SYSTEM



- |                                   |                     |
|-----------------------------------|---------------------|
| 1. liver                          | 6. splenic vein     |
| 2. main portal vein               | 7. gastric vein(s)  |
| 3. right portal vein distribution | 8. esophageal veins |
| 4. left portal vein distribution  | 9. large intestine  |
| 5. portosplenic confluence        | 10. appendix        |