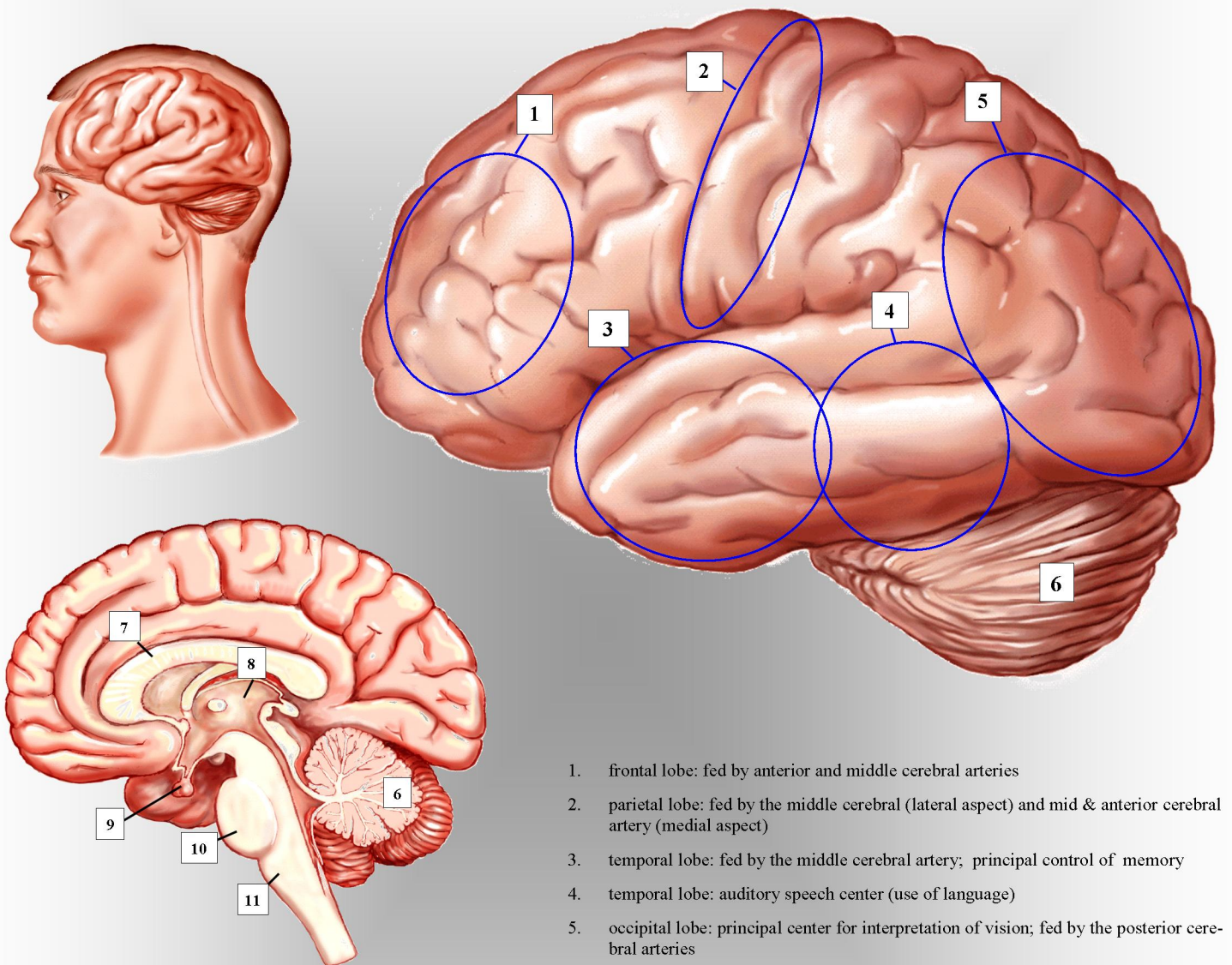


# THE HUMAN BRAIN



1. frontal lobe: fed by anterior and middle cerebral arteries
2. parietal lobe: fed by the middle cerebral (lateral aspect) and mid & anterior cerebral artery (medial aspect)
3. temporal lobe: fed by the middle cerebral artery; principal control of memory
4. temporal lobe: auditory speech center (use of language)
5. occipital lobe: principal center for interpretation of vision; fed by the posterior cerebral arteries
6. cerebellum: fed by the posterior cerebral arteries; controls coordination of movement and balance
7. corpus callosum: secretes cerebrospinal fluid
8. midbrain: fed by the middle cerebral artery; communicates information from upper brain centers to lower parts of the body via spinal cord connections and vice-versa
9. pituitary gland: fed by the middle cerebral artery; controls growth and key organ system functions
10. pons: controls autonomic functions
11. medulla: fed by posterior cerebral arteries; monitors and specifically controls vital cardiovascular functions