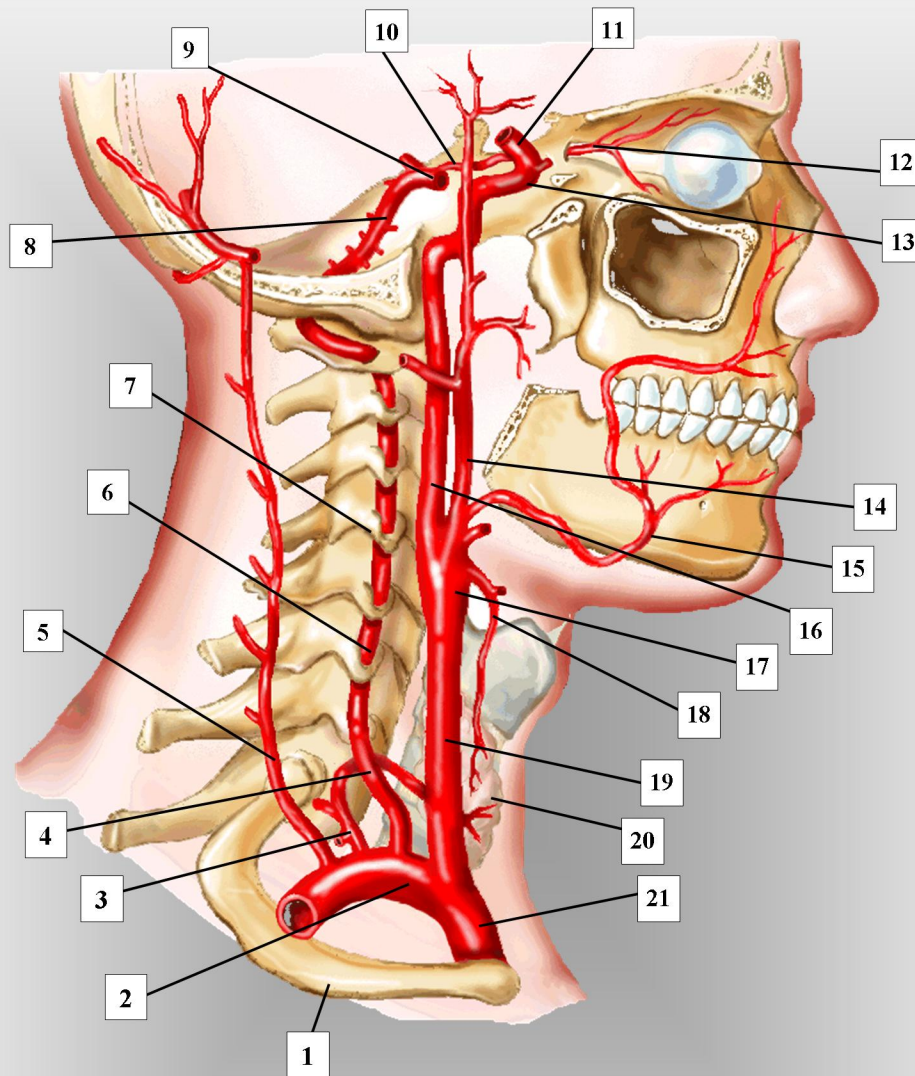


THE CAROTID AND VERTEBRAL ARTERIAL SYSTEM



- | | | |
|--|--|---|
| 1. first rib (inferior to clavicle) | 8. basilar artery | 15. rt. facial artery |
| 2. rt. subclavian artery | 9. left posterior cerebral artery | 16. rt. internal carotid artery |
| 3. rt. thyrocervical trunk | 10. rt. posterior communicating artery | 17. rt. carotid bulb, or sinus |
| 4. rt. prevertebral vertebral artery | 11. rt. middle cerebral artery | 18. rt. superior thyroid artery |
| 5. rt. deep cervical artery | 12. rt. ophthalmic artery | 19. rt. common carotid artery |
| 6. rt. intervertebral vertebral artery | 13. rt. carotid siphon | 20. rt. lobe of thyroid gland |
| 7. transverse process of spine | 14. rt. external carotid artery | 21. rt. brachiocephalic, or innominate artery |