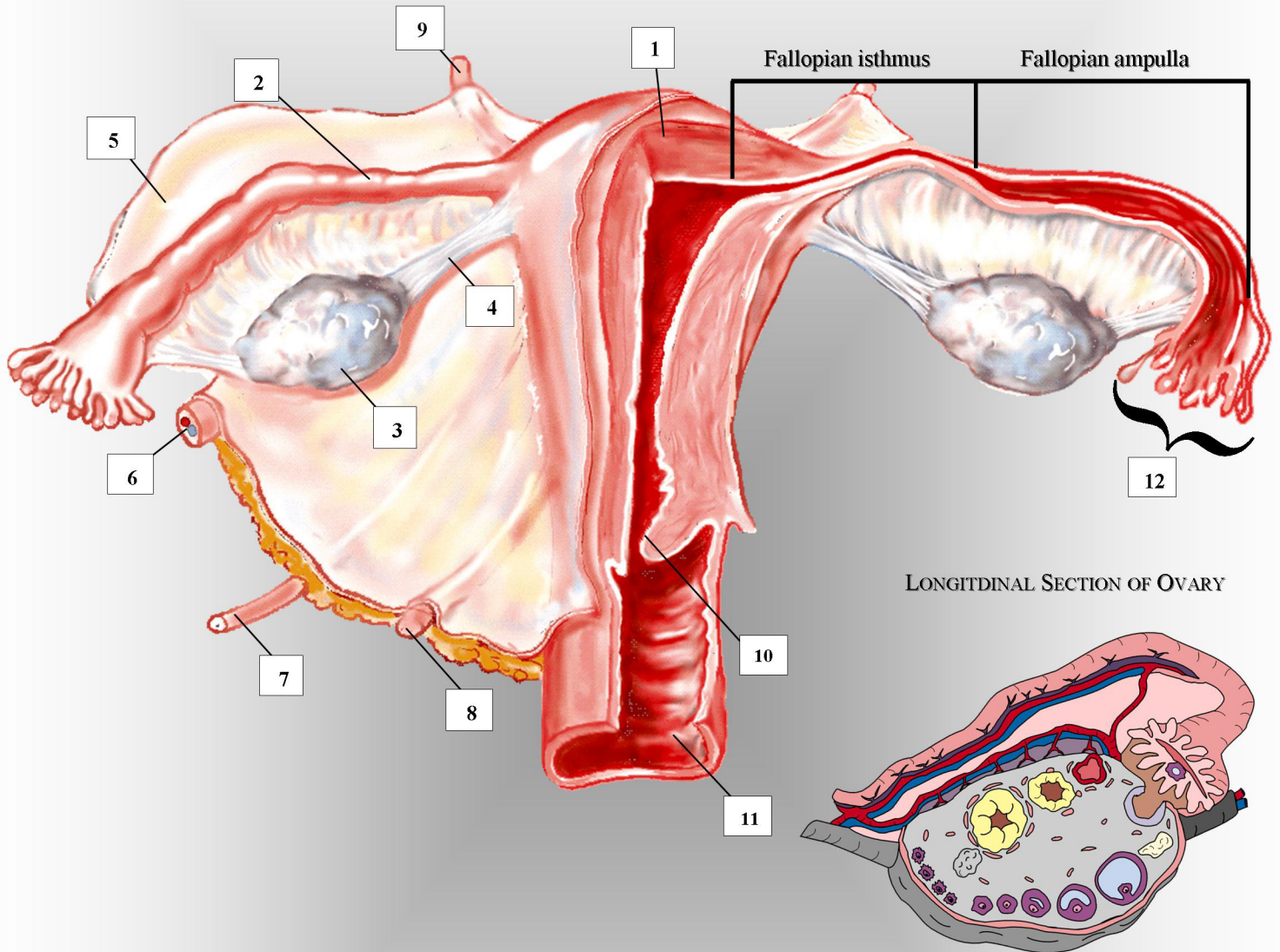


# FEMALE REPRODUCTIVE SYSTEM



- |                                |                              |                              |
|--------------------------------|------------------------------|------------------------------|
| 1. uterine myometrium          | 5. broad ligament            | 9. superior uterine ligament |
| 2. fallopian tube              | 6. ovarian artery & vein     | 10. external cervical os     |
| 3. ovary                       | 7. ureter                    | 11. vaginal canal            |
| 4. ovarian suspensory ligament | 8. inferior uterine ligament | 12. fimbriae                 |

