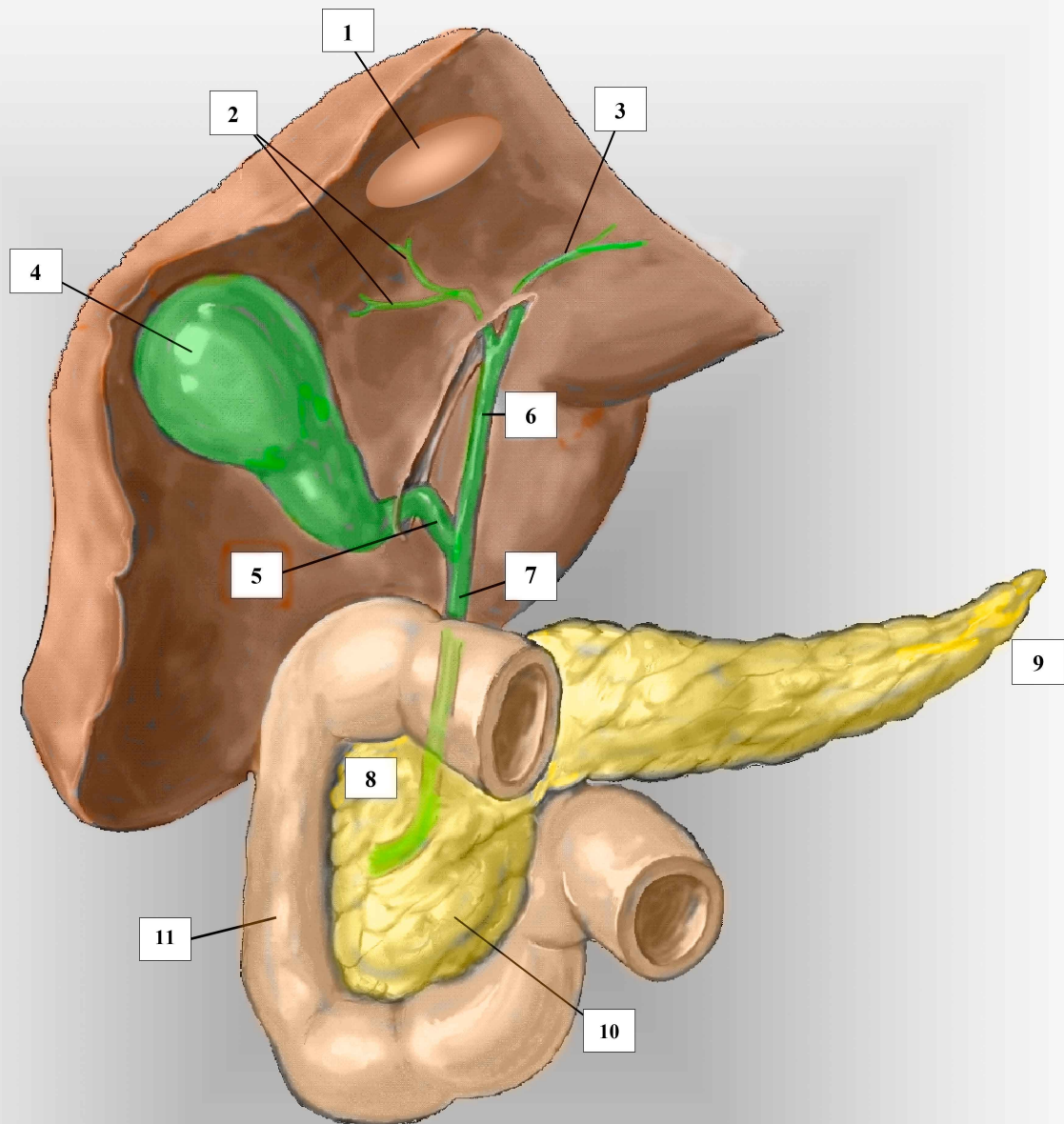


# BILIARY DUCTAL SYSTEM



1. inferior surface of liver
2. right intrahepatic biliary ducts
3. left intrahepatic biliary ducts
4. gallbladder (fundus, body neck)
5. cystic duct
6. common hepatic bile duct
7. common bile duct
8. pancreatic head
9. pancreatic tail
10. uncinata (*hook like*) process
11. duodenum