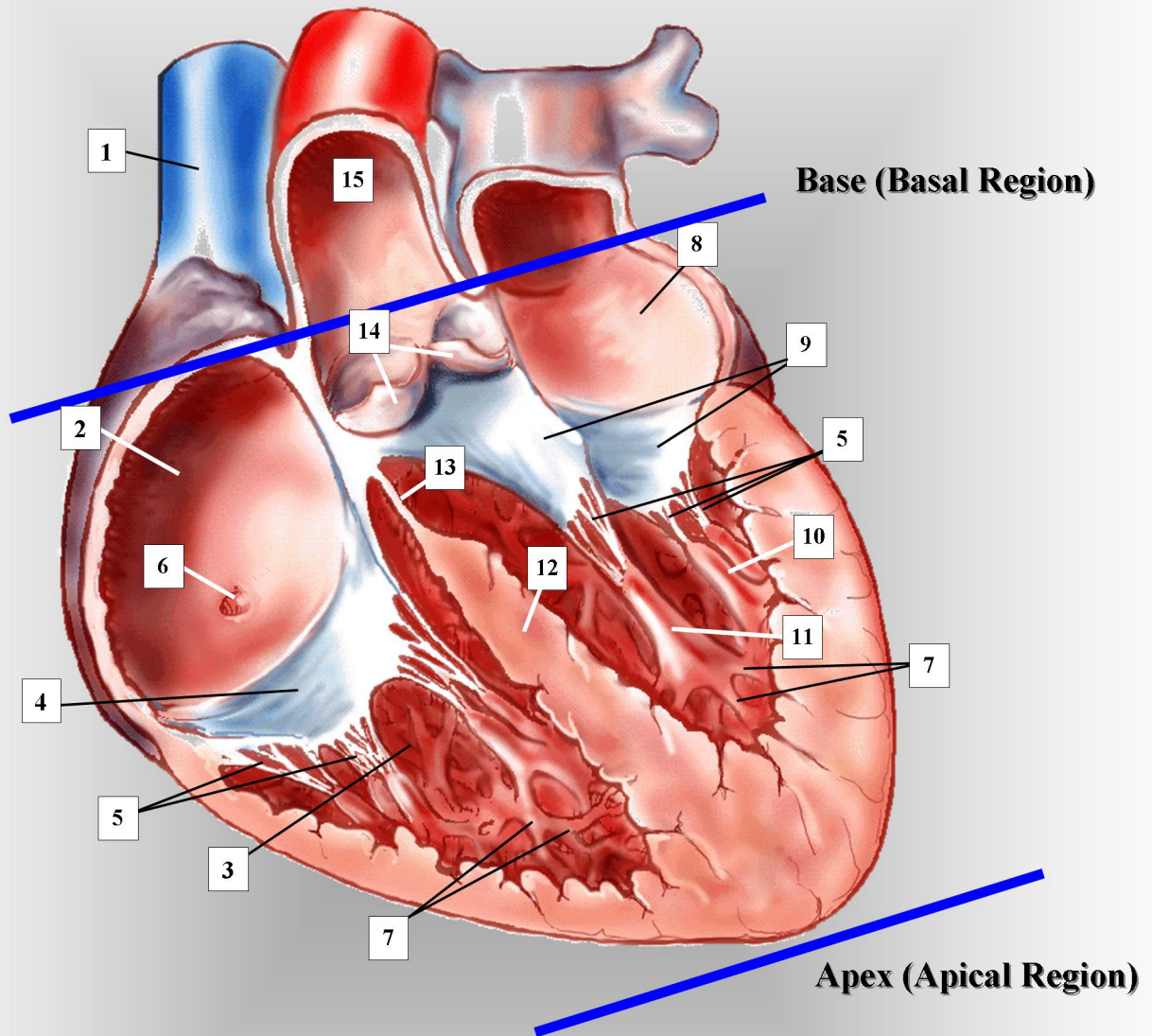


ADULT HEART— LONG AXIS SECTION

ANTERIOR/POSTERIOR VIEW



- | | | |
|-----------------------|---|---|
| 1. superior vena cava | 6. coronary sinus (entrance) | 11. anteromedial papillary muscle pair (mitral valve) |
| 2. right atrium | 7. trabeculae carneae | 12. interventricular septum (anterior wall of the left ventricle) |
| 3. right ventricle | 8. left atrium | 13. membranous septum |
| 4. tricuspid valve | 9. mitral valve (bicuspid valve) | 14. aortic valve |
| 5. chordae tendinae | 10. posterolateral papillary muscle pair (mitral valve) | 15. ascending aorta |

