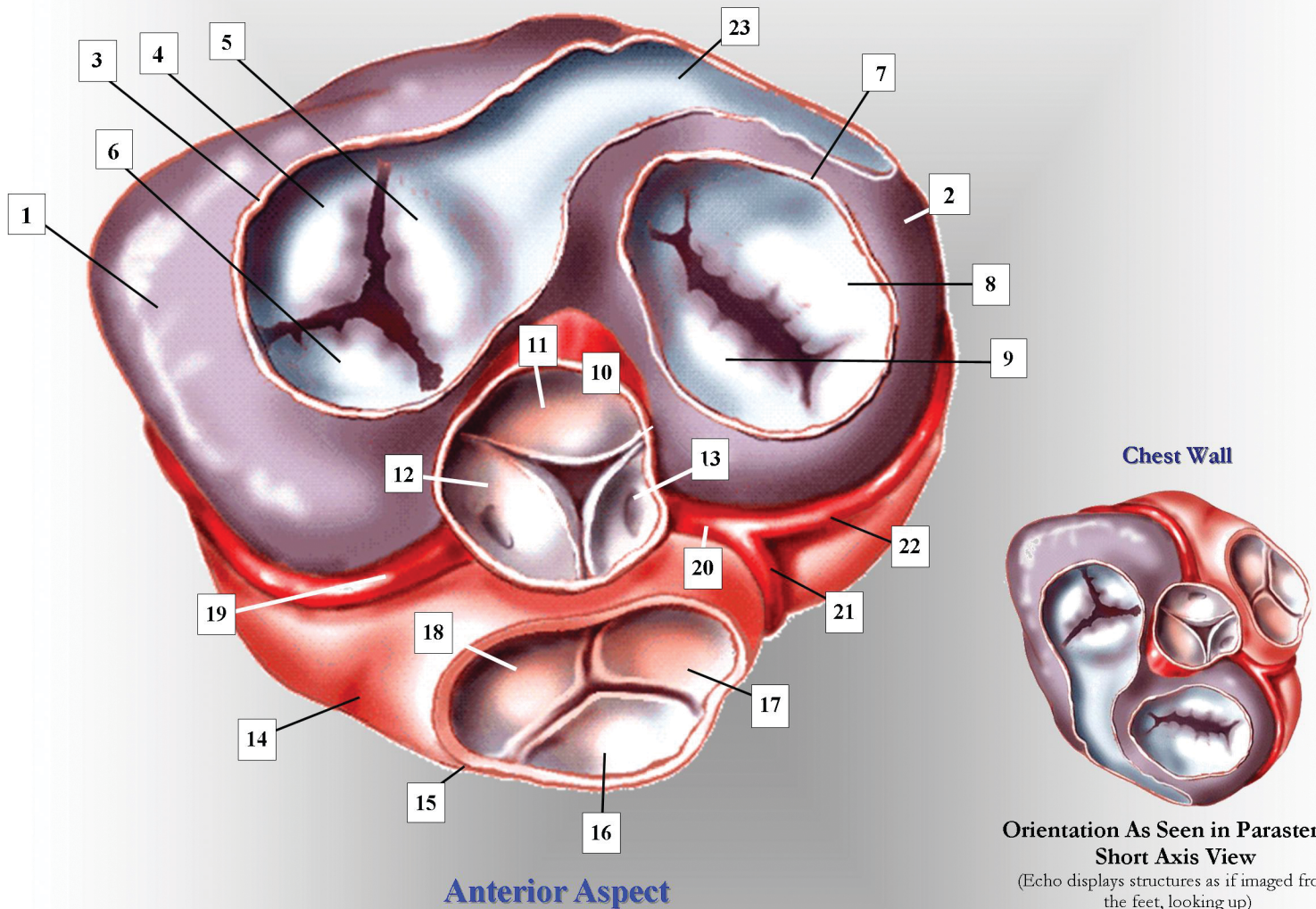


ADULT HEART- BASAL SURFACE

VIEWED FROM ABOVE

Anatomic Posterior Aspect



Chest Wall

Orientation As Seen in Parasternal Short Axis View

(Echo displays structures as if imaged from the feet, looking up)

Anterior Aspect

- | | | |
|-----------------------------------------|---------------------------------------|-----------------------------------------------------|
| 1. right atrium | 9. mitral valve- anteromedial leaflet | 16. pulmonic valve- anterior cusp |
| 2. left atrium | 10. aortic root./aortic valve annulus | 17. pulmonic valve- posterior cusp |
| 3. tricuspid valve annulus | 11. aortic valve- non-coronary cusp | 18. pulmonic valve- right cusp |
| 4. tricuspid valve- posterior leaflet | 12. aortic valve- right coronary cusp | 19. right coronary artery |
| 5. tricuspid valve- septal leaflet | 13. aortic valve- left coronary cusp | 20. left main coronary artery |
| 6. tricuspid valve- anterior leaflet | 14. right ventricle | 21. left anterior descending coronary artery branch |
| 7. mitral valve annulus | 14. right ventricle | 22. posterior circumflex coronary artery |
| 8. mitral valve- posterolateral leaflet | 15. pulmonic valve annulus | 23. coronary sinus (great coronary vein) |

